

**T**ime to upload some pop culture savvy again with our twentieth update. Even if the answers elude you, a little study time will put you in touch with your teen patrons.

Finished? Up to date? Pop culturally cool? Check out past quizzes in these issues: October 1999, August 2000, December 2000, April 2001, August 2001, December 2001, April 2002, and August 2002. Web quiz updates eight through nineteen (December 2002–August 2006) are still available by clicking on the links.

### REAL LOVE

#### 1. What's the status of these real-life couples?

- |   |                       |
|---|-----------------------|
| a. Britney and K-Fed                    | 1. Headed for Divorce |
| b. Reese Witherspoon and Ryan Phillippe | 2. Engaged            |
| c. Sacha Baron Cohen and Isla Fisher    | 3. Married            |
| d. Ellen Pompeo and Chris Ivery         |                       |
| e. Katie Holmes and Tom Cruise          |                       |

### GAME ON

2. The new Sony Playstation 3 and the new Nintendo Wii just launched. The Wii is unique because the new controller is \_\_\_\_\_ sensitive and will invite many non-gamers into the gaming fold.

### WE GOT THE BEAT

3. Leaving *MySpace* in their musical dust, many bands are mobbing this new music-centered social networking site.

- a. Beatzone   b. MOG   c. Pod   d. Candyshop

4. Taking the tween scene by storm are the latest Disney musical faves based on the popular books.

- a. Raven & the Storms   b. Cheetah Girls   c. Laughy Taffy

5. Match the artists on the left with their latest album releases on the right.

- |                          |                                     |
|--------------------------|-------------------------------------|
| a. Justin Timberlake     | 1. <b>Smack That</b>                |
| b. All-American Rejects  | 2. <b>Sexyback</b>                  |
| c. Christina Aguilera    | 3. <b>The Sweet Escape</b>          |
| d. Gwen Stefani          | 4. <b>It Ends Tonight</b>           |
| e. Akon featuring Eminem | 5. <b>Tha Blue Carpet Treatment</b> |
| f. Snoop Dogg            | 6. <b>Hurt</b>                      |

6. Match the artists on the left with their hot singles on the right.

- |                      |                                |
|----------------------|--------------------------------|
| a. JoJo              | 1. "White & Nerdy"             |
| b. Chris Brown       | 2. "Call Me When You're Sober" |
| c. Evanescence       | 3. "Too Little Too Late"       |
| d. Weird Al Yankovic | 4. "Say Goodbye"               |

### FLICKS

7. *Don't You Forget About Me* is a documentary in the works about which beloved teen-scene movie director?

8. The adventures of Meatwad, Frylock, and Master Shake are coming to a multiplex near you! Which Cartoon Network show will be made into a movie in 2007?

- a. *Foster's Home for Imaginary Friends*  
b. *Aqua Teen Hunger Force*   c. *Camp Lazlo*

### TUBE TIME

9. The "Real OC," aka Laguna Beach, isn't too happy about what's happened to their town since MTV moved in. Among other complaints, they claim that the number of \_\_\_\_\_ predators has soared in their town—an accusation called a "crock" by a member of their police force.

10. Teens love these new hot shows—match their descriptions on the left with the titles on the right.

- |   |                                |
|---|--------------------------------|
| a. Ordinary people from all over the world gain superpowers.  | 1. <i>Brothers and Sisters</i> |
| b. In an adaptation from a Colombian telenovela, a bright but ordinary-looking woman is a fish out of water working at a glitzy fashion magazine. | 2. <i>Heroes</i>               |
| c. This ongoing saga involves a well-to-do but down-to-earth California clan of diverse personalities.  | 3. <i>Ugly Betty</i>           |

### REAL LIFE

11. Bono teamed up with Oprah recently to help launch his new "Product Red" campaign to eliminate AIDS in Africa. Which of the following companies does NOT have a special red product in the campaign?

- a. Gap   b. Motorola   c. Converse   d. Apple iPod   e. Nike

### Scoring

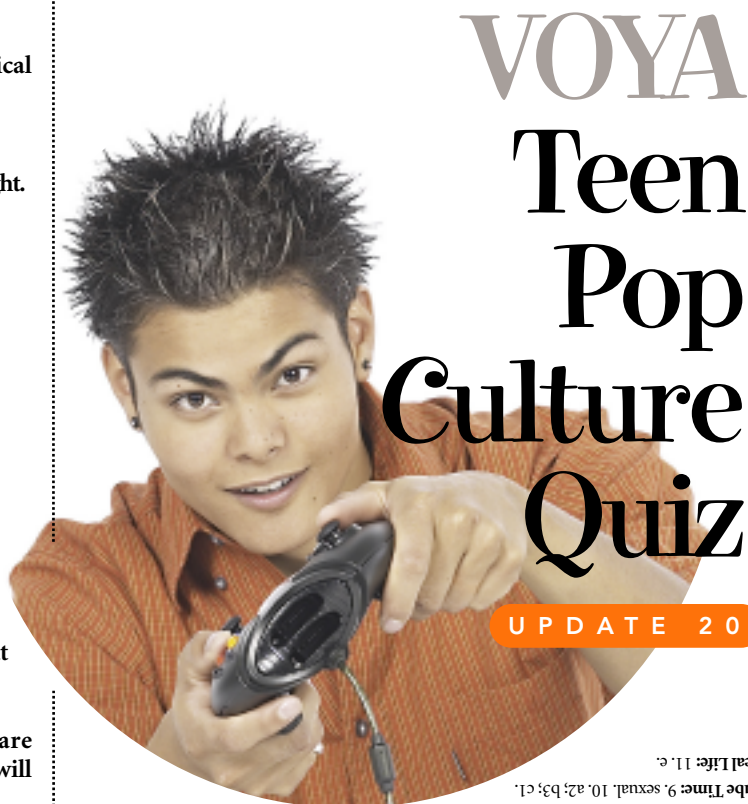
Give yourself five points for each correct answer. Each component of the multiple choice counts as one point. A perfect score is 53.

43–53 First in your class at MIT!

33–42 M. C. Escher is your favorite MC.

23–32 Bet you're fluent in JavaScript—as well as Klingon.

0–22 You spend every weekend at the Renaissance Fair and even have your name in your underwear.



Real Love: 11. e.

Tube Time: 9. sexual, 10. a, 2; b, 3; c, 1.

Flicks: 7. John Hughes; 8. b.

We Got the Beat: 3. b; 4. b; 5. a, 2; b; 6. a, 3; b; 4; c; 2; d, 1.

Game On: 2. Motion

Real Love: 1. a; 1; b; 1; c; 2; d; 2; e, 3.

Answer Key

*It's a dirty job, but somebody has to do it! Slaving away in front of her TV, reading magazines, listening to music, and surfing the 'Net (all at the same time) is Erin V. Helmrich, Teen Services Librarian at the Ann Arbor District Library in Michigan. Contact her at helmriche@aald.org.*